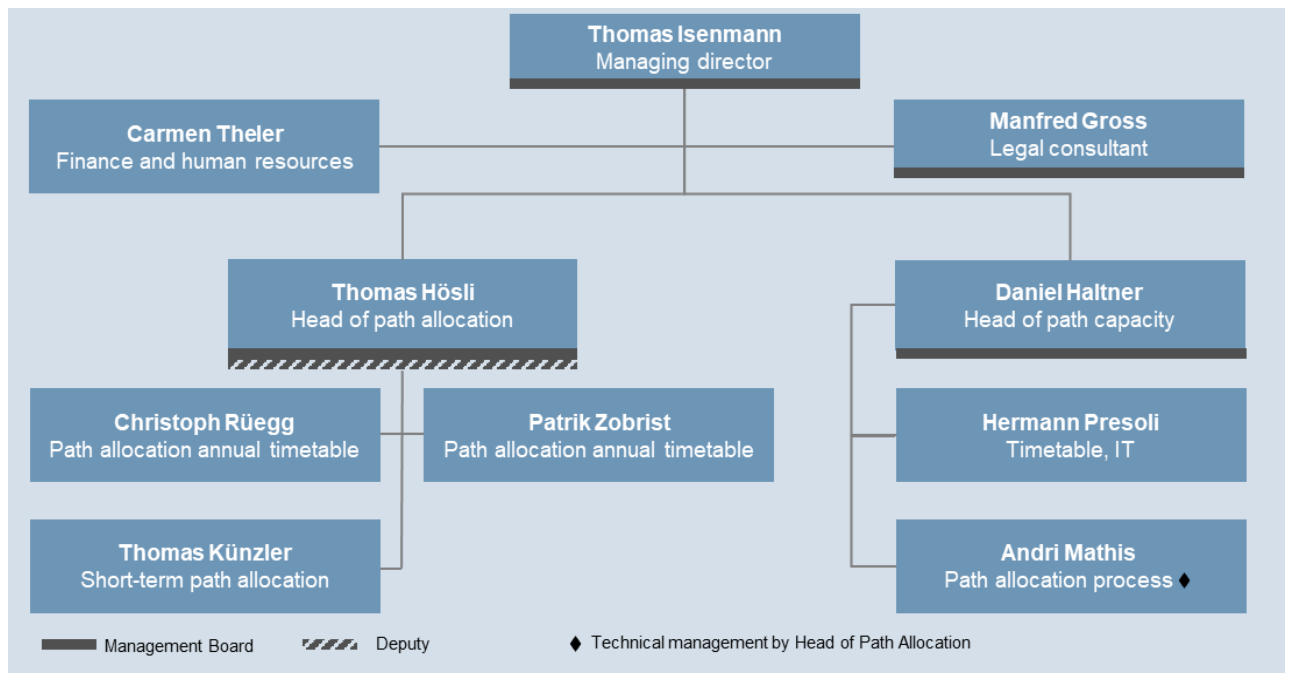


An overview of the trasse.ch organisation

Organisation chart



Board of Directors

Chairman: Urs Hany
 Members: Klaus Bischof, SOB Infrastruktur
 Rudolf Büchi, SBB Infrastruktur
 Roland Pfaffen, BLS Netz AG
 Barbara Zollinger, VöV

Shareholders

SBB, BLS, SOB and VöV each hold 25% of the issued share capital.

Auditors

Dr Röthlisberger AG, Bern
 Audits are required to comply with the Swiss standards for a limited audit.

Berne, 1 June 2019