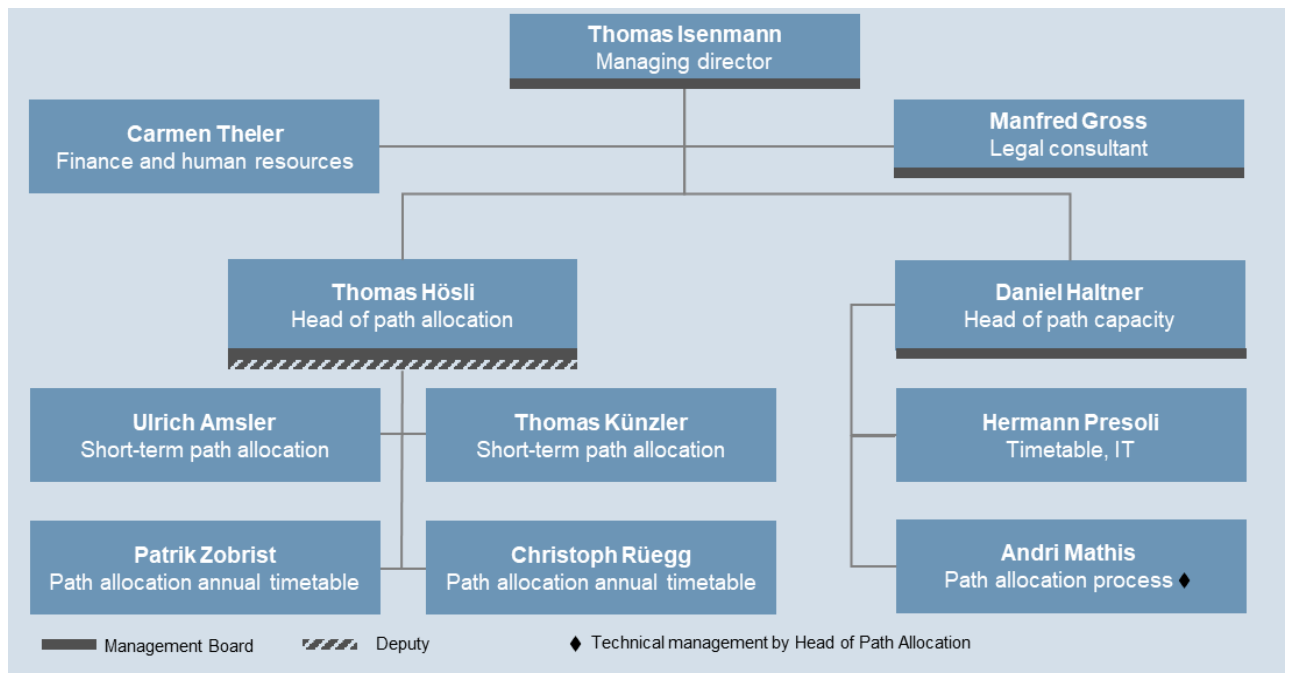


## An overview of the trasse.ch organisation

### Organisation chart



### Board of Directors

Chairman: Urs Hany  
 Members: Klaus Bischof, SOB Infrastruktur  
 Rudolf Büchi, SBB Infrastruktur  
 Roland Pfaffen, BLS Netz AG  
 Barbara Zollinger, VöV

### Shareholders

SBB, BLS, SOB and VöV each hold 25% of the issued share capital.

### Auditors

Dr Röthlisberger AG, Bern  
 Audits are required to comply with the Swiss standards for a limited audit.

Berne, 1 May 2019